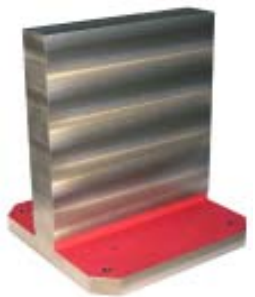
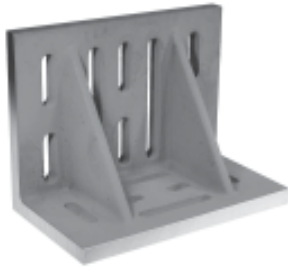


Suburban Tool, Inc.

Pallet Fixtures, Tooling Plates & Large Angle Plates

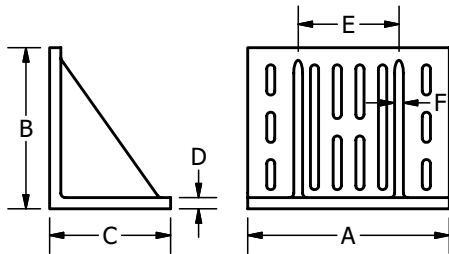


GIANT SLOTTED WEBBED ANGLE PLATES



GAW-161209

MODEL #		A	B	C	D	E	F	WT (#)
MACHINED	GROUND							
GAW-122418	--	12"	24"	18"	1-1/2"	5"	1-3/16"	268
GAW-161209	GAW-161209-G	16"	12"	9"	1-1/8"	8"	7/8"	115
GAW-183024	--	18"	30"	24"	1-3/4"	9"	1-3/8"	620
GAW-201612	GAW-201612-G	20"	16"	12"	1-1/8"	10"	7/8"	210



- Made from class 35-40 cast iron.
- Machined finish - Square and parallel within 0.002" per 6".
- Ground finish (up to 20") - Square and parallel within 0.0005" per 6".
- Extra thickness and heavy ribbed construction.
- Multiple 13/16" wide slots for many bolting and clamping possibilities.

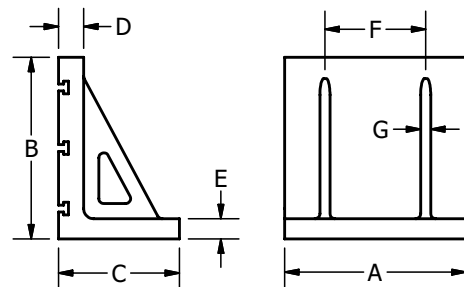
T-SLOTTED WEBBED ANGLE PLATES



TAP-121818

- Provides an accurate vertical base for mounting vises, sub-plates, parts or fixtures.
- Standard 5/8" T-slots on 6" centers.
- Made from one piece, class 35-40 cast iron.
- Extra heavy 2-1/2" wall thickness provides stability during milling operations.
- Faces and edges machined flat, square and parallel within 0.001" per 12".

MODEL #	A	B	C	D	E	F	G	WT (#)
TAP-121818	18"	18"	12"	2-1/2"	2"	10"	1"	450
TAP-122424	24"	24"	12"	2-1/2"	2"	12"	1-1/2"	700



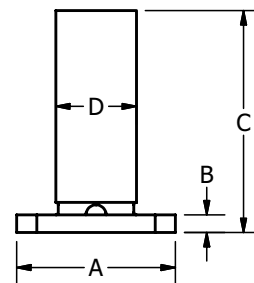
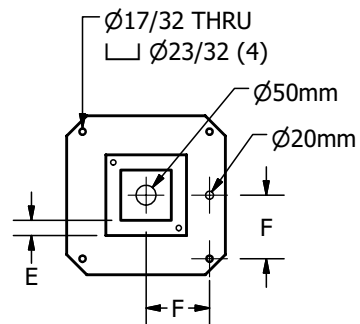
SQUARE COLUMN PALLET FIXTURES



TSC-1

- Tombstone fixtures provide a solid base for mounting vises, fixtures, or sub-plates.
- Made from one-piece, class 40 cast iron that has been stress-relieved.
- Base and sides milled flat, square & square within 0.001" in 12".
- DIN mounting standard, JIS mounting optional.
- All square columns have drilled and tapped lifting holes in the top surface and coolant drain holes at the base of the column.
- Available standard as plain milled or custom made with your own hole pattern.
- A large number of standard size castings are in stock.
- Other materials available on request.

MODEL #	A	B	C	D	E	F	WT (#)
TSC-1	400mm	1-3/4"	22"	8"	1-1/2"	6.30"	275
TSC-2	400mm	1-3/4"	26"	10"	1-1/2"	6.30"	365
TSC-400836	400mm	1-3/4"	36"	8"	1-1/2"	6.30"	620
TSC-4001036	400mm	1-3/4"	36"	10"	1-1/2"	6.30"	736
TSC-4001236	400mm	1-3/4"	36"	12"	1-1/2"	6.30"	874
TSC-3	500mm	2"	22"	8"	1-1/2"	7.87"	360
TSC-4	500mm	2"	26"	10"	1-1/2"	7.87"	530
TSC-500836	500mm	2"	36"	8"	1-1/2"	7.87"	695
TSC-5001036	500mm	2"	36"	10"	1-1/2"	7.87"	804
TSC-5001236	500mm	1-3/4"	36"	12"	1-1/2"	7.87"	954
TSC-5	630mm	2-1/4"	28-1/2"	12"	2-1/4"	9.84"	950
TSC-6	630mm	2-1/4"	28-1/2"	15-3/4"	2-1/4"	9.84"	1180
TSC-6301036	630mm	2-1/4"	36"	10"	2-1/4"	9.84"	1170
TSC-6301236	630mm	2-1/4"	36"	12"	2-1/4"	9.84"	1362
TSC-6301436	630mm	2-1/4"	36"	14"	2-1/4"	9.84"	1536
TSC-6301636	630mm	2-1/4"	36"	16"	2-3/8"	9.84"	1768

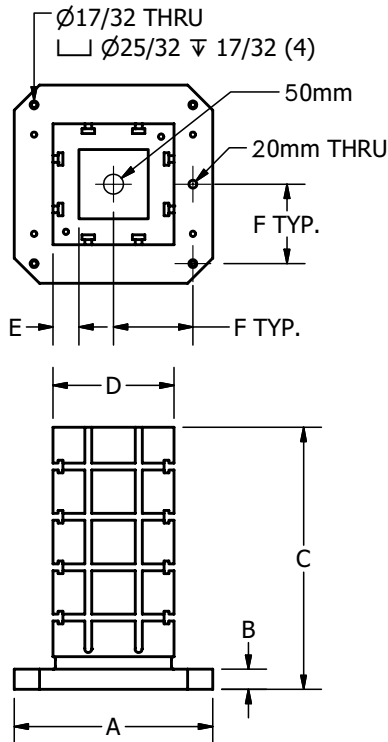


T-SLOTTED PALLET FIXTURES



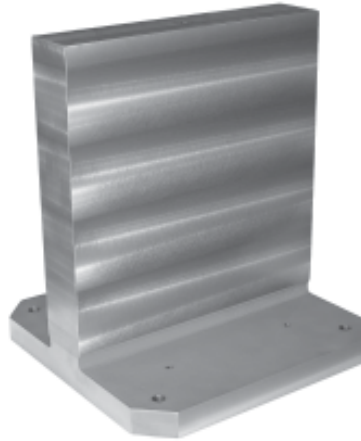
T-SLOT-2

- Tombstone fixtures with standard 5/8 t-slots provide for quick and easy set-ups.
- Made from one-piece, class 40 cast iron that has been stress-relieved.
- Base and sides milled flat, square & parallel to 0.001" in 12".
- DIN mounting standard, JIS mounting optional.
- All have drilled and tapped lifting holes in the top surface and coolant drain holes at the base of the column.
- T-slot spacing in 5" pattern for standard mounting of most workholding devices.
- A large number of standard size castings in stock.
- Other materials available on request.



MODEL #	A	B	C	D	E	F	WT (#)
T-SLOT-1	400mm	1-3/4"	26"	10"	2"	6.30"	445
T-SLOT-2	500mm	2"	26"	12"	2"	7.87"	625

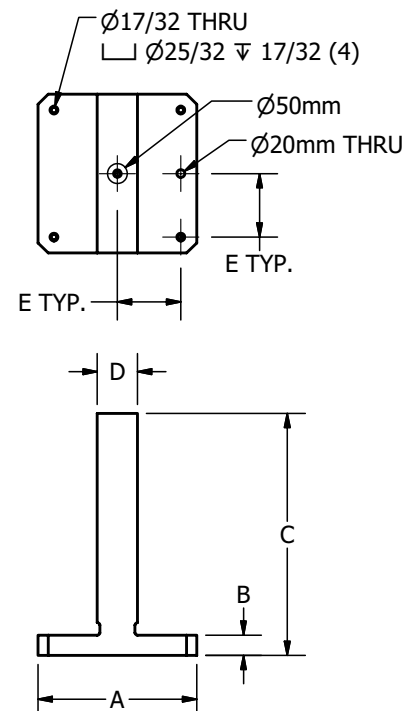
T-TYPE PALLET FIXTURES



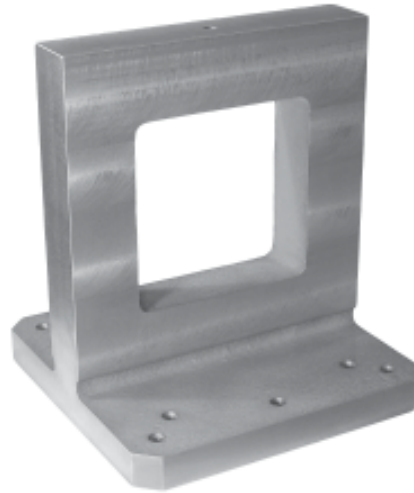
TST-5

- Tombstone fixtures provide an accurate vertical base for mounting vises, fixtures, or sub-plates.
- Made from one piece, class 40 cast iron that has been stress relieved.
- Base and sides milled flat, square & parallel to 0.001" in 12".
- DIN mounting standard, JIS mounting optional.
- Available standard as plain milled or custom made with your own hole pattern.
- A large number of standard size castings in stock.
- Other materials available on request.

MODEL #	A	B	C	D	E	WT (#)
TST-1	400mm	1-3/4"	18"	3"	6.30"	310
TST-2	400mm	1-3/4"	24"	4"	6.30"	480
TST-400536	400mm	1-3/4"	36"	5"	6.30"	978
TST-3	500mm	2"	18"	3"	7.87"	450
TST-4	500mm	2"	24"	4"	7.87"	660
TST-500536	500mm	2"	36"	5"	7.87"	1279
TST-5	630mm	2-1/4"	28-1/2"	5"	9.84"	1100
TST-630636	630mm	2-1/4"	36"	6"	9.84"	1919

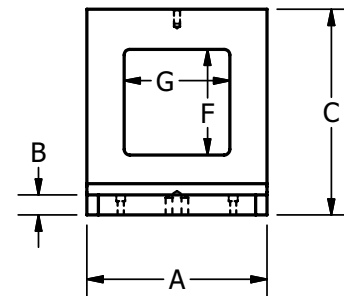
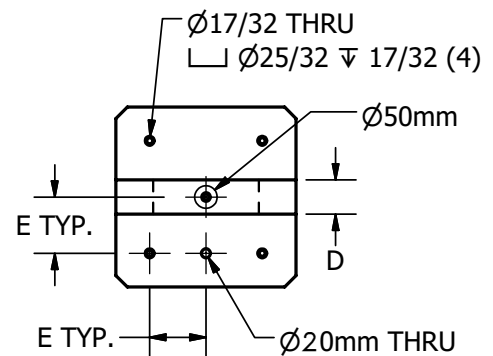


WINDOW TYPE PALLET FIXTURES



TSW-1

- Tombstone fixtures provide an accurate base for mounting tooling and fixture plates.
- Allows for front and back machining of parts.
- Made from one-piece, class 40 cast iron that has been stress-relieved.
- DIN mounting standard, JIS mounting optional.
- Base and sides milled flat, parallel, and square to 0.001" in 12".
- A large number of standard size castings in stock.
- Other materials available on request.



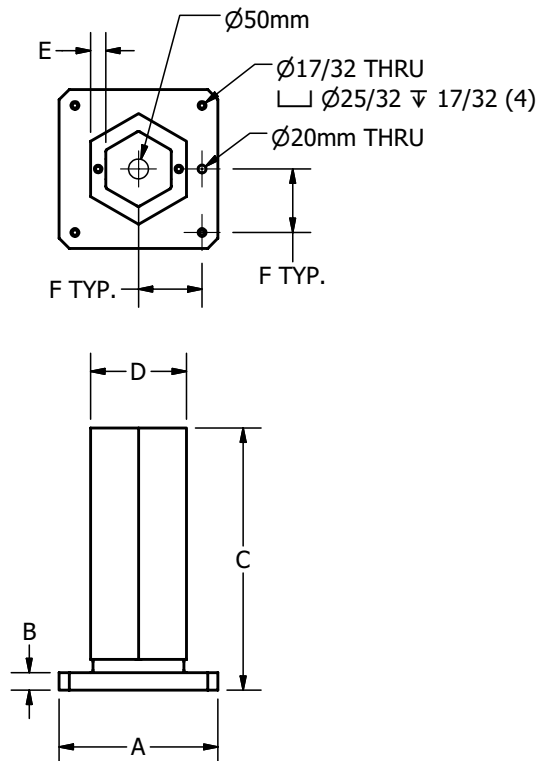
MODEL #	A	B	C	D	E	F	G	WT (#)
TSW-1	400mm	1-3/4"	18"	3"	6.30"	9-1/4"	9-1/4"	245
TSW-2	400mm	1-3/4"	24"	4"	6.30"	15-1/4"	9-1/4"	330
TSW-3	500mm	2"	18"	3"	7.87"	9-1/4"	12-3/4"	355
TSW-4	500mm	2"	24"	4"	7.87"	15-1/4"	12-3/4"	455

HEXAGONAL COLUMN PALLET FIXTURES



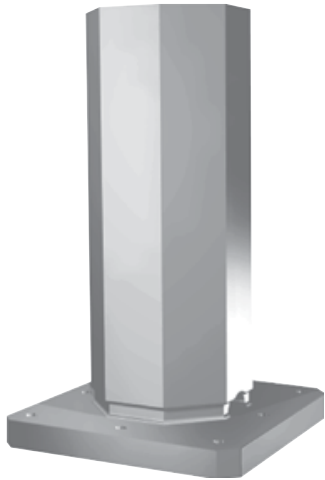
TSH-2

- Tombstone fixtures with 6 accurate mounting surfaces, for an easy way to increase production.
- Made from one-piece, class 40 cast iron.
- Base and sides milled flat, parallel & square to 0.001" in 12".
- DIN mounting standard, JIS mounting optional.
- All have drilled and tapped lifting holes in the top surface and coolant drain holes at the base of the column.
- Available standard as plain milled or custom made with your own hole pattern.
- A large number of standard size castings in stock.
- Other materials available on request.



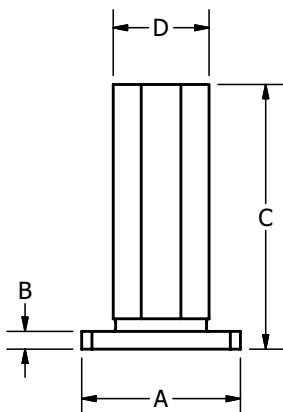
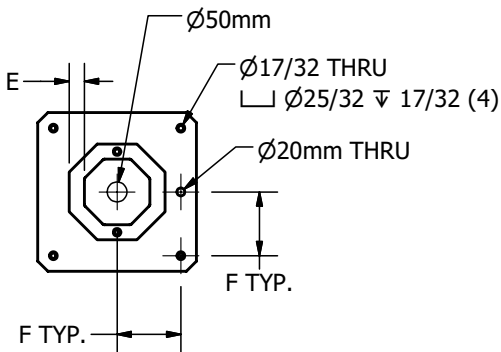
MODEL #	A	B	C	D	E	F	WT (#)
TSH-1	400mm	1-3/4"	26"	9-1/2"	1-1/2"	6.30"	375
TSH-2	500mm	1-3/4"	26"	13"	1-3/4"	7.87"	610

OCTAGONAL COLUMN PALLET FIXTURES



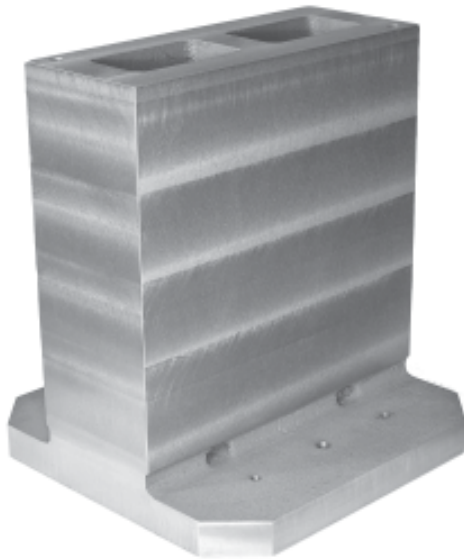
TSO-1

- Tombstone fixtures with 8 mounting surfaces are ideal for high part volume applications.
- Made from one-piece, stress-relieved, class 40 cast iron.
- Base and sides milled flat, parallel, and square to 0.001" in 12".
- DIN mounting standard, JIS mounting optional.
- All have drilled and tapped lifting holes in the top surface and coolant drain holes at the base of the column.
- Available standard as plain milled or custom made with your own hole pattern.
- A large number of standard size castings in stock.
- Other materials available on request.

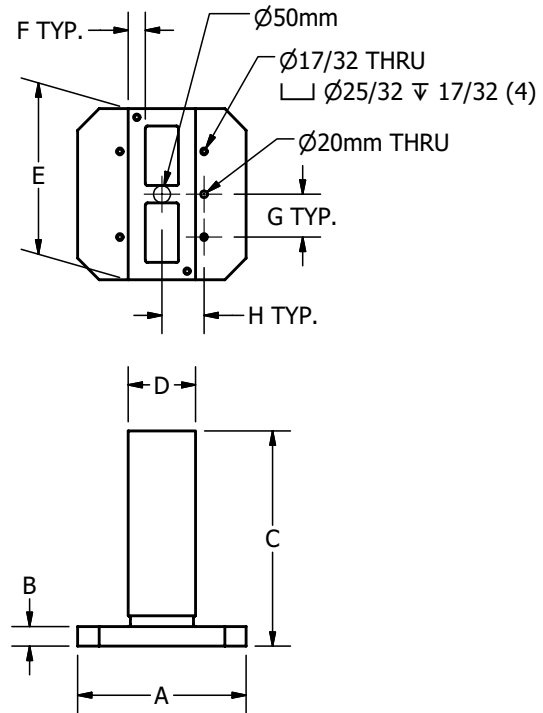


MODEL #	A	B	C	D	E	F	WT (#)
TSO-1	400mm	1-3/4"	26"	9-1/2"	1-1/2"	6.30"	360
TSO-2	500mm	1-3/4"	26"	13"	1-3/4"	7.87"	590

RECTANGULAR COLUMN PALLET FIXTURES



TSR-5



- Tombstone fixtures provide a solid base for mounting vises, fixtures or sub-plates.
- Made from one-piece, stress-relieved, class 40 cast iron.
- Base and sides milled flat, parallel, and square to 0.001" in 12".
- DIN mounting standard, JIS mounting optional.
- Available standard as plain milled or custom made with your own hole pattern.
- A large number of standard size castings in stock.
- Other materials available on request.

MODEL #	A	B	C	D	E	F	G	H	WT (#)
TSR-400636	400mm	2-1/4"	36"	6"	400mm	1-1/2"	4.92"	6.30"	818
TSR-5	500mm	2-1/4"	22"	7.87"	500mm	2-1/4"	4.92"	4.92"	840
TSR-500836	500mm	2-1/4"	36"	8"	500mm	2"	4.92"	6.30"	1342
TSR-6	630mm	2-1/4"	28-1/2"	9.84"	630mm	2-1/4"	9.84"	9.84"	1350
TSR-6301036	630mm	2-1/4"	36"	10"	630mm	2-1/4"	9.84"	9.84"	1940

CUSTOM PALLET FIXTURES

You may require pallet fixtures in sizes or shapes that are not listed in this catalog. We can supply custom built tools to help you with your production needs.

This worksheet is for specifying a custom order pallet fixture. You'll find it useful for taking the proper measurements and having the information at hand, when requesting a quote on a special pallet fixture.

Using the labeled dimensions in the diagrams on the following pages, make a copy of this page and fill in the table with the type of column required and the appropriate dimensions for your custom order fixture. Use the "notes" area at the bottom for any explanations you feel are needed to complete the description of the column you want us to build.

If the custom order is a shape other than the ones shown, please send a sketch or drawing. Feel free to send any additional attachments you think will help us with your quote.

Company Name: _____

Contact Name: _____

Address: _____

City: _____ State: _____ Zip: _____

Email: _____ Country: _____

Phone: _____ Fax: _____

COLUMN TYPE >				NOTES
DIM	SIZE	DIM	SIZE	
A		G		
B		H		
C		I		
D		J		
E		K		
F				

CUSTOM PALLET FIXTURES



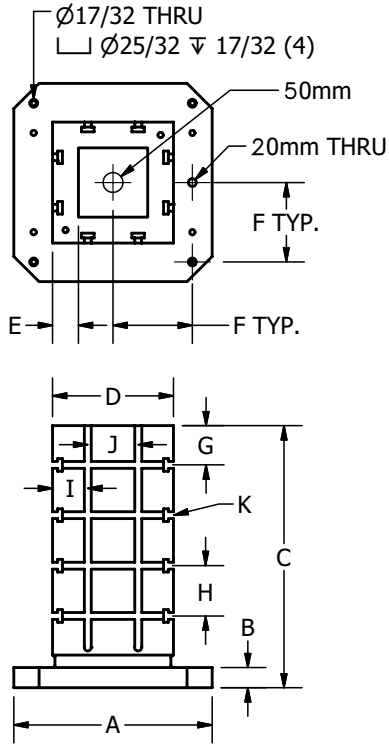
CUSTOM TOMBSTONE MANUFACTURED
FOR WEN TECHNOLOGY, INC.
RALEIGH, NC

ANY SIZE & SHAPE

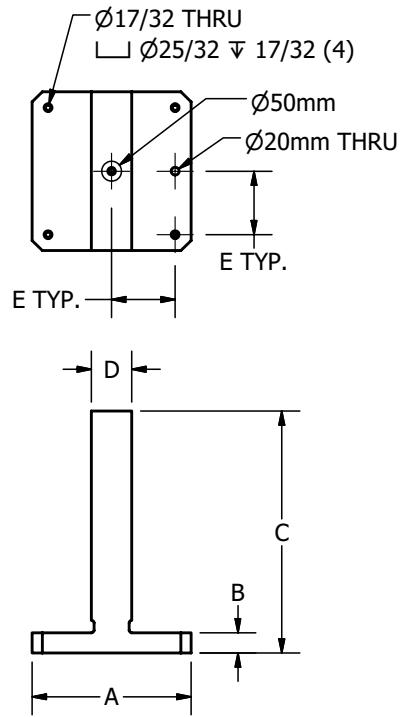


CUSTOM PALLET FIXTURES

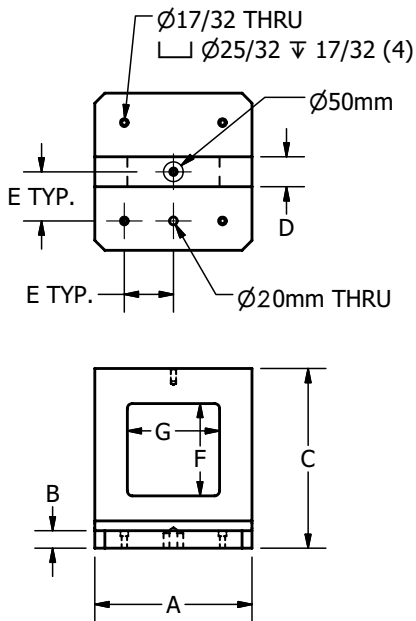
T-SLOT TYPE



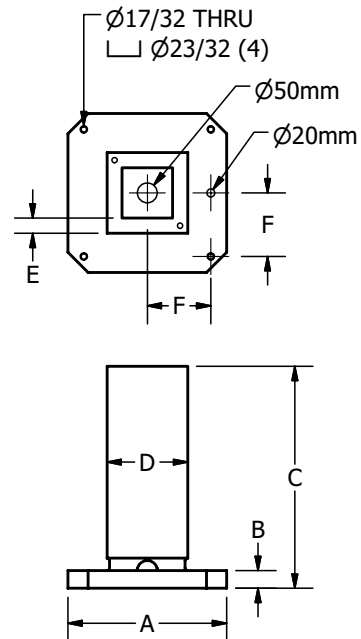
T TYPE



WINDOW TYPE

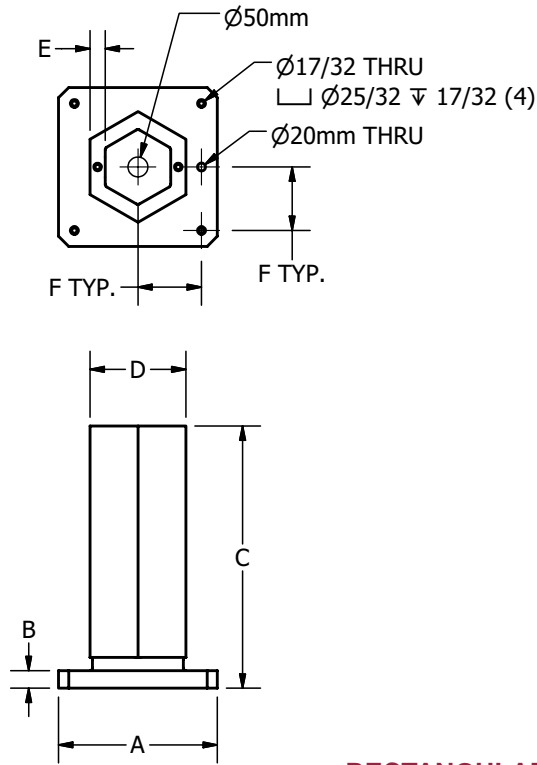


SQUARE TYPE

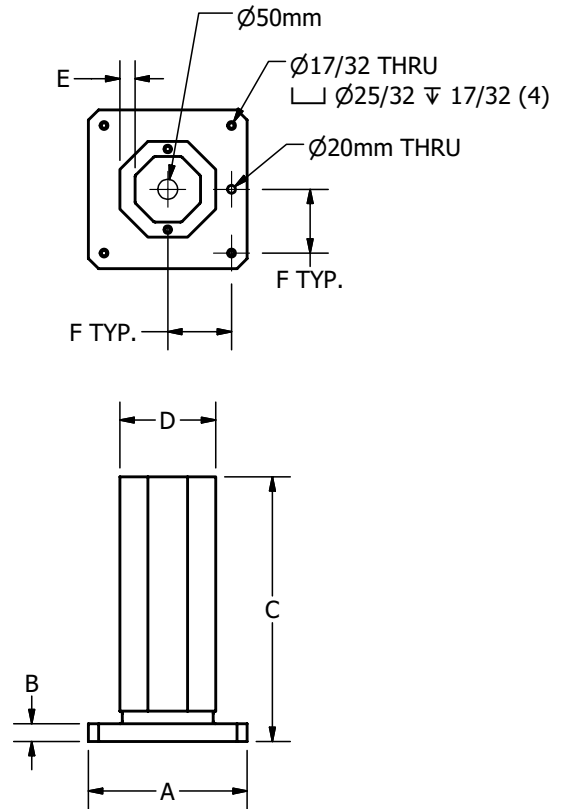


CUSTOM PALLET FIXTURES

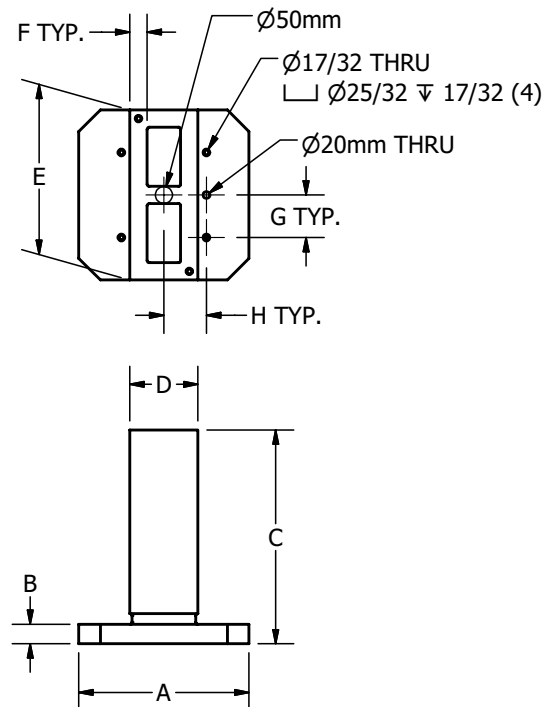
HEXAGONAL TYPE



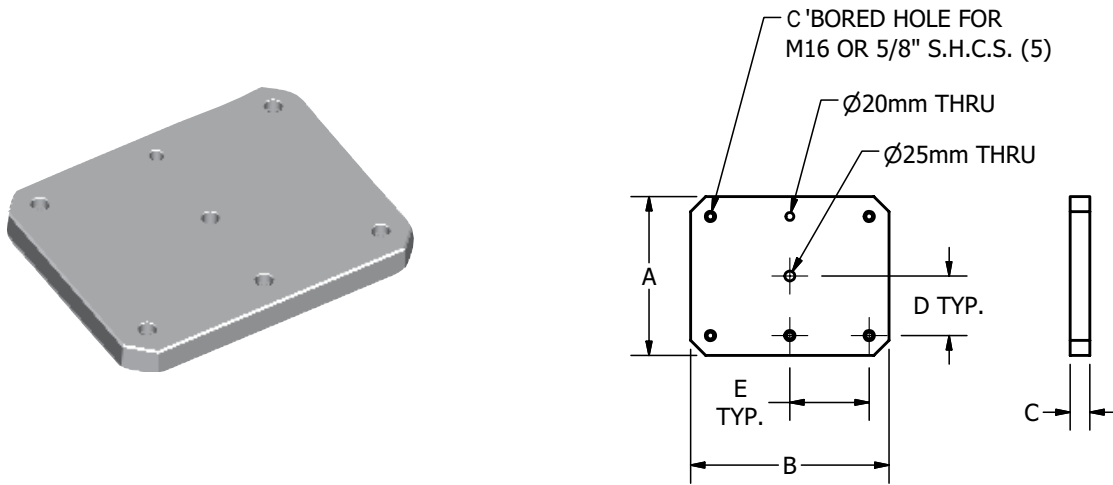
OCTAGONAL TYPE



RECTANGULAR TYPE



TOOLING PLATES



- Plain tooling / riser plates provide a convenient base for custom workholding solutions.
- Made from class 40 cast iron, stress-relieved and annealed.
- Top and bottom flat & parallel within 0.001" per 12".
- Available standard as plain ground or custom made with your own hole pattern.
- A large number of standard size castings in stock.
- Other materials available on request.

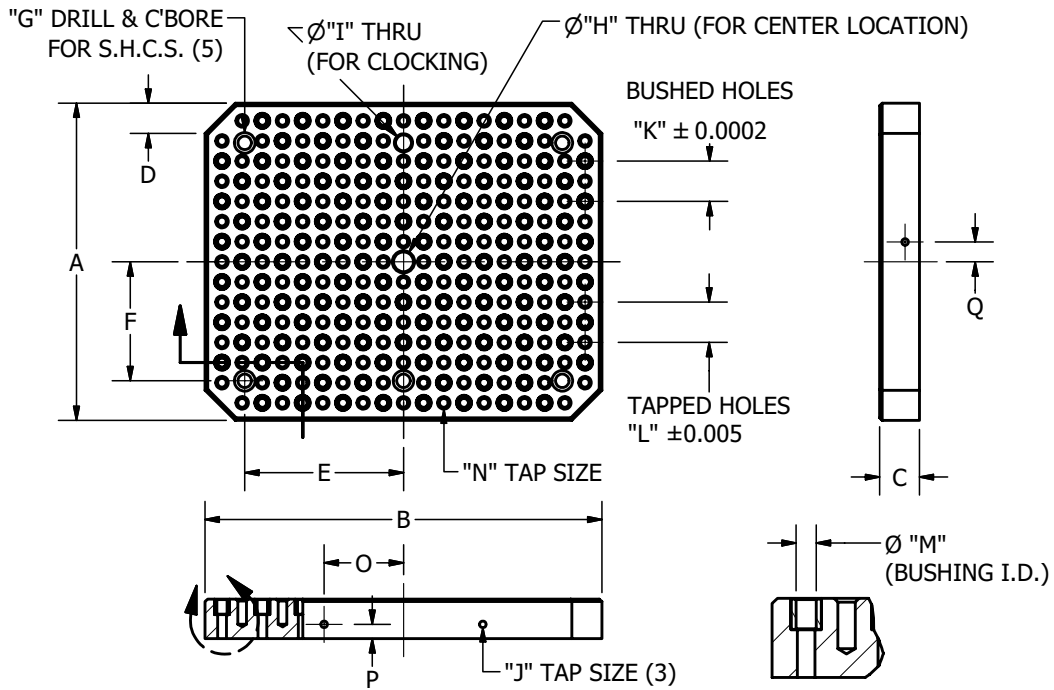
SQUARE TOOLING PLATES

MODEL #	A	B	C (±0.0254mm)	D	E	WT (#)
TTPS-1616200	400mm	400mm	50mm	160mm	160mm	150
TTPS-2020200	500mm	500mm	50mm	200mm	200mm	233
TTPS-2424200	630mm	630mm	50mm	250mm	250mm	346
TTPS-3232238	800mm	800mm	60mm	300mm	300mm	660

RECTANGULAR TOOLING PLATES

MODEL #	A	B	C (±0.0254mm)	D	E	WT (#)
TTPR-1520200	400mm	500mm	50mm	150mm	200mm	187
TTPR-2024200	500mm	630mm	50mm	200mm	250mm	291
TTPR-2432238	630mm	800mm	60mm	250mm	300mm	525

CUSTOM TOOLING PLATES



Company Name: _____

Contact Name: _____

Address: _____

City: _____ State: _____ Zip: _____

Email: _____ Country: _____

Phone: _____ Fax: _____

DIMENSION	SIZE	DIMENSION	SIZE	DIMENSION	SIZE
A		G		M	
B		H		N	
C		I		O	
D		J		P	
E		K		Q	
F		L			
NOTES					

Distributed By:

Suburban Tool, Inc.

4141 North Atlantic Boulevard • Auburn Hills, MI 48326
Phone: 888-647-TOOL or 248-391-7800 • Fax: 248-391-7462
Email: tools@subtool.com • Website: www.subtool.com